

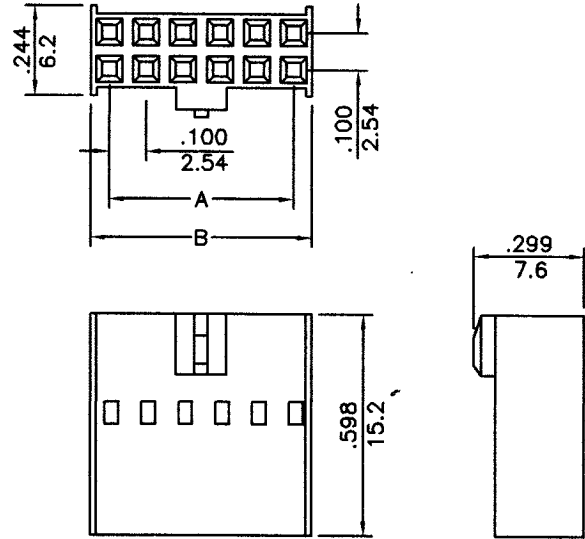
.100"(2.54mm) pitch Wire to Board Connectors



CH2545B Series

- * Poles:6-36
 - * Material:PBTP UL94V-0,BLACK
 - * Suitable CT2543 series terminal
- Specifications
- * Current rating: 3A AC, DC
 - * Voltage rating: 250V AC, DC
 - * Temperature range: -25°C~+85°C
 - * Insulation resistance: 1,000M Ω min.
 - * Withstand voltage: 1,000AC/minute

inches
mm



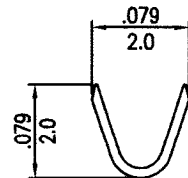
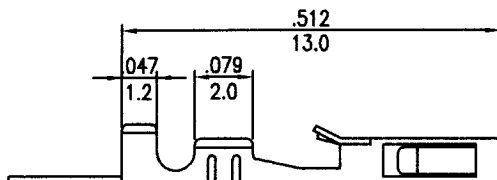
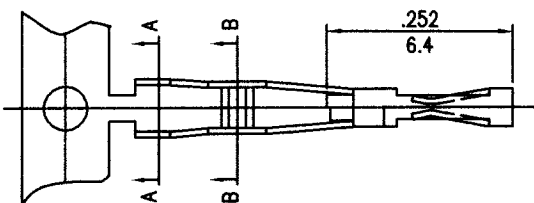
CIRCUITS	PART NO.	DIMENSION in.(mm)		CIRCUITS	PART NO.	DIMENSION in.(mm)	
		A	B			A	B
6	CH2545B-2X3	0.200(5.08)	0.300(7.62)	22	CH2545B-2X11	1.000(25.40)	1.100(27.94)
8	CH2545B-2X4	0.300(7.62)	0.400(10.16)	24	CH2545B-2X12	1.100(27.94)	1.200(30.48)
10	CH2545B-2X5	0.400(10.16)	0.500(12.70)	26	CH2545B-2X13	1.200(30.48)	1.300(33.02)
12	CH2545B-2X6	0.500(12.70)	0.600(15.24)	28	CH2545B-2X14	1.300(33.02)	1.400(35.56)
14	CH2545B-2X7	0.600(15.24)	0.700(17.78)	30	CH2545B-3X15	1.400(35.56)	1.500(38.10)
16	CH2545B-2X8	0.700(17.78)	0.800(20.32)	32	CH2545B-2X16	1.500(38.10)	1.600(40.64)
18	CH2545B-2X9	0.800(20.32)	0.900(22.86)	34	CH2545B-2X17	1.600(40.64)	1.700(43.18)
20	CH2545B-2X10	0.900(22.86)	1.000(25.40)	36	CH2545B-2X18	1.700(43.18)	1.800(45.72)

.100"(2.54mm) pitch crimp terminal

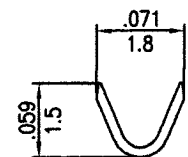
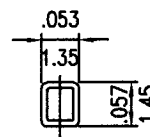
CT2543 Series

- * Material:Phos bronze
- * Finished:Tin-plated 60u"
- * Used in CH2543, CH2543B, CH2543C series housings
- * Wire range:AWG#24~#28
- * Insulation O.D:1.60mm(max)
- * Thickness:0.2mm
- * Q'TY:15,000pcs/reel

inches
mm



A-A SECTION



B-B SECTION